



Community Action
Partnership of Hennepin County

2020 ANNUAL REPORT



Mission, Vision, and Values

Mission

Partner with community to provide effective and responsive services to reduce the impact of poverty in Hennepin County.

Vision

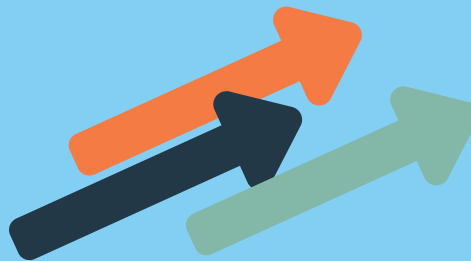
Hennepin County without poverty.

Values

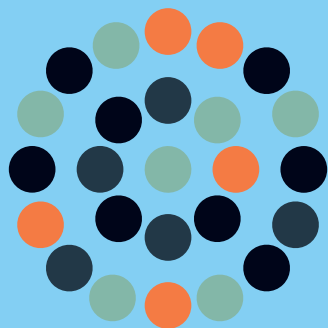


Building Relationships

Creating Opportunities



Eliminating Barriers



Equity and Inclusion

Responsible Stewardship



Strengthening Community

History



1965

The Minnesota Office of Economic Opportunity is created. By year-end, nearly all Minnesota counties are served by a Community Action Agency (CAA).



1969

Executive Directors of the Minnesota CAAs form the Minnesota CAP Directors Association, which is reorganized into the Minnesota CAP Association in 1971.

1986

Community Action Partnership of Suburban Hennepin (CAPSH) is formed amidst a growing awareness that poverty in Hennepin County is not confined to urban areas.

2005

National Indicators of Community Action Performance is implemented as a way to provide a uniform and coherent national picture of the work and accomplishments of the entire Community Action Network.

2020

2020

CAP-HC rises to the changing needs of the Hennepin County community through the dual pandemics of COVID-19 and racism, providing thousands of individuals and families with crisis assistance and resources to help them on the path to self-sufficiency.

August 20, 1964

Based on advocacy from Dr. Martin Luther King, Jr., President Lyndon Johnson signs the federal Economic Opportunity Act, creating the Community Action Network. The Network connects millions of children and families to essential services, works to build community resiliency, and helps people move out of poverty.

1,000+

1966

Just eighteen months after the Community Action Network is created, over one thousand national and local agencies have been established.

1976

Minneapolis Community Action Agency is formed under the governance of the Minneapolis City Council. The organization works as part of the city to create and support programs to eliminate poverty in Minneapolis.

1994

The Office of Community Services introduces Results-Oriented Management and Accountability, a performance-based initiative designed to preserve the anti-poverty focus of Community Action and promote greater effectiveness across the Community Action Network.



Community Action
Partnership of Hennepin County

2016

CAPSH is re-launched as Community Action Partnership of Hennepin County (CAP-HC) and receives the formal state designation to serve as the CAA for Minneapolis in addition to suburban Hennepin communities.

Contents

A Message from CAP-HC Leadership	5
We Can Break the Poverty Cycle	6
Community Profile	8
Addressing Immediate Needs	9
Client Spotlight: Energy-Related Repair	11
Client Spotlight: Rapid Rehousing	13
Client Spotlight: Vehicle Repair Program.	15
Building Toward Self Sufficiency and Prosperity	16
COVID-19 & CAP-HC Response	18
Board and Leadership Team	19
Agency Financials	20
Thank You to Our Funders and Partners	22

From Leadership

Dear Friends and Supporters:

Once again, it's time for us to reflect on and celebrate the positive impact Community Action Partnership of Hennepin County (CAP-HC) has had in our community. To say that 2020 was an eventful year is an understatement. From the global pandemic to the national racial reckoning sparked here in Minneapolis by the killing of George Floyd, the challenges we've faced together have been unlike any others in recent memory. Yet through these challenges, we accomplished so much!

From a planning perspective, CAP-HC completed its triannual Community Needs Assessment and 2020-2022 Strategic Plan. These two exercises ensure agency operations are responsive to the greatest needs of residents. Programmatically, thousands of people received energy, water, and renter's assistance to help them navigate crisis situations. Hundreds were able to learn skills and build assets that will bring stability and prosperity to their lives now, and to the generations that follow. We discovered new ways of working together as a board and staff to ensure clients were able to access our programs and services during the shelter-in-place directive. Additionally, we launched more than a dozen new programs and nurtured relationships with over fifty partner organizations, enabling us to connect Hennepin County residents with a broad range of resources needed to address factors that cause and reinforce poverty.

Steps taken in 2020 have also positioned the Board of Directors to provide oversight and deeper connection with the community. All 21 seats on our Board are filled from the private, public, and community sectors. The transfer of authority from the Managing Committee back to the Board is complete. And a new five-committee structure will provide organizational leadership and insight moving forward (see page 18).

In the pages that follow, you'll learn how each of CAP-HC's programs and services has helped lift up individuals, families, and Hennepin County as a whole. We are proud of these accomplishments, and we also acknowledge that there is still more work to do to bridge the opportunity gaps people continue to face. As we look ahead to the challenges to come in 2021 and beyond, it is reassuring to know that we have a passionate, dedicated CAP-HC community—staff, board members, partners, volunteers, and supporters—who make this work possible. And because of this work, Hennepin County is becoming a stronger, more resilient place to live every day.

With sincere gratitude,



A handwritten signature in black ink that reads "Michael Vekich".

Michael Vekich
Board Chair



A handwritten signature in black ink that reads "Clarence Hightower".

Dr. Clarence Hightower
Executive Director

We Can Break the Cycle of Poverty

Equal opportunity. It's an idea that was woven into the fabric of this country at its founding. The United States was meant to be a refuge for people to live without artificial barriers. But we have fallen short of that reality. We are a country plagued by opportunity gaps. From housing to health care, and from education to employment, deeply intertwined factors cause and reinforce poverty.

People living near and below the Federal Poverty Level (FPL) tend to live in areas with limited food, housing, and employment options. With limited options, it's more difficult for people to meet their basic needs. When basic needs are not met, serious health issues may arise. It can be a challenge to pay regular bills, much less build assets for the future. The health crises of COVID-19 and racism in 2020 only exacerbated existing disparities.

According to 2019 U.S. Census data, the poverty rate in Hennepin County is 9.6 percent. Of children under 18, 13.5 percent live at or under FPL. It could be easy to think that those are low percentages. After all, the corresponding national data points are 12.3 and 16.8 percent. **But poverty negatively affects everyone.**


Research from IZA in 2016 revealed that the U.S. is one of the least generationally mobile countries in the developed world, speaking to the cyclical nature of poverty. Children living at or below FPL are less likely to reach their full cognitive potential. As adults, these children who were left behind may not qualify for higher-paying jobs. As parents, their children are likely to go through the same cycle. A 2015 study by Michael McLaughlin and Mark Rank estimated that childhood poverty alone costs the U.S. roughly one trillion dollars

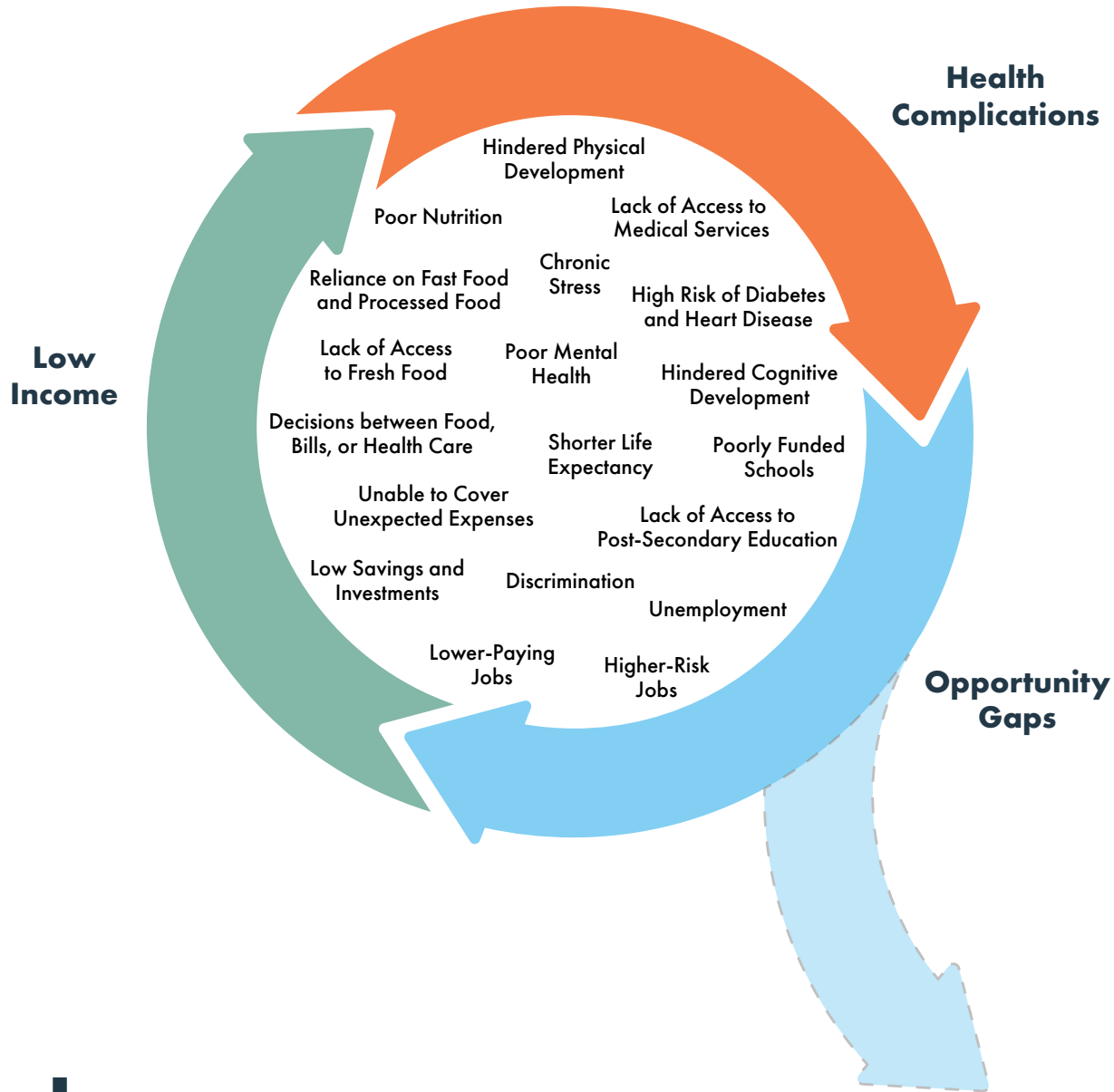
a year in lost productivity, increased health care costs, and higher criminal-justice expenses. These are a few examples of the high cost of poverty for all of us.

What if we could break the cycle? What if we could bridge opportunity gaps for individuals and families living at or near the FPL? **Our work at Community Action Partnership of Hennepin County (CAP-HC) is about breaking the cycle of poverty.**

Poverty is a complex issue requiring multi-faceted solutions. CAP-HC is one of over 1,000 Community Action Agencies across the U.S., and one of 24 agencies and 11 Tribal Nations in Minnesota, dedicated to community-specific solutions for eradicating poverty. We listen to our communities, address immediate needs, and help people build toward self-sufficiency and prosperity.

Fifteen organizations and 771 individuals participated in CAP-HC's 2020 Community Needs Assessment. Hennepin County community members echoed other findings that barriers like health, housing, and high cost of living limit economic opportunity. Participants described their stress and fear as they struggled to pay bills and buy food. The most frequent unmet needs mentioned were transportation, financial wellness, and housing. Systemic oppression and White supremacy were also named as contributors to intergenerational poverty.

CAP-HC has, and will continue to respond with programs and services focused on serving our community as **we work toward a Hennepin County without poverty.** 



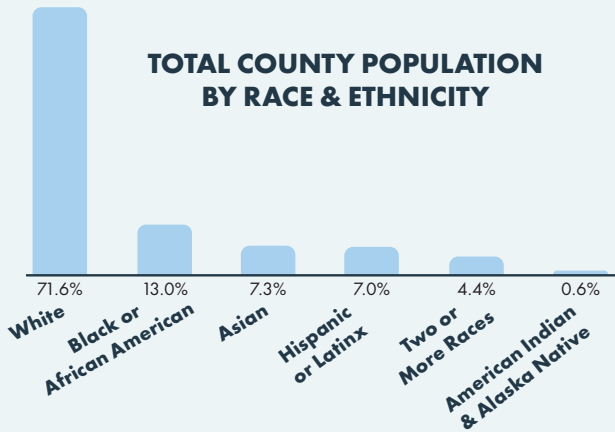
the CYCLE of POVERTY

**CAP-HC
Programs & Services
DESIGNED
TO DISRUPT
the Cycle of Poverty**

Sources for article and graphic: CAP-HC’s 2020 Community Needs Assessment, The Improve Group; *Improving the Health of People Living in Deep Poverty*, Minnesota Department of Human Services, December 2020; Minnesota Community Action Partnership Annual Report, 2019; National Community Action Partnership Impact Report, 2019; *10 Reasons Why Cutting Poverty Is Good for Our Nation*, Center for American Progress Action Fund, 2011.

Hennepin County Community Profile

County Population **1,265,843**



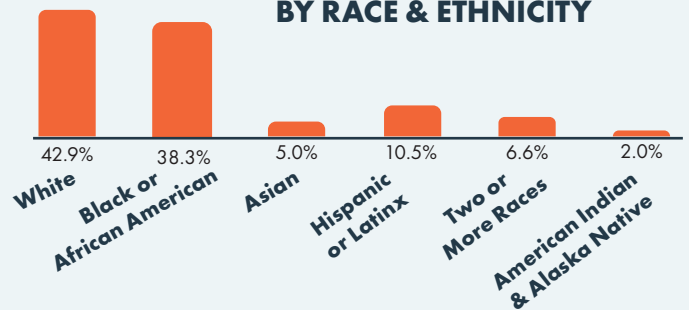
FPL: Federal Poverty Level

- County-Wide
- People Living Below FPL
- CAP-HC Clients

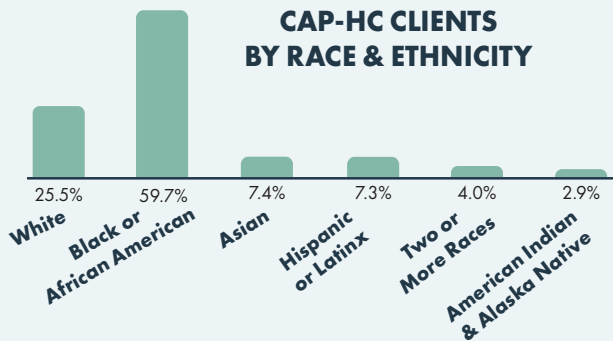


Population Living Below FPL **9.6%**
APPROXIMATELY 119,461 PEOPLE

POPULATION LIVING BELOW FPL BY RACE & ETHNICITY



CAP-HC CLIENT HOUSEHOLDS **20,000+**



GENDER



	Female	Male	Non-Binary
County-Wide	50.6%	49.4%	no data available
People Living Below FPL	53.9%	45.9%	no data available
CAP-HC Clients	57.6%	41.2%	1.2%

Median County Income **\$78,167**



Unemployment **1.8%** **30.2%**

TRANSPORTATION TO WORK



Drive Themselves or Carpool **44.8%** **9.5%**



Public Transit **3.6%** **11.1%**



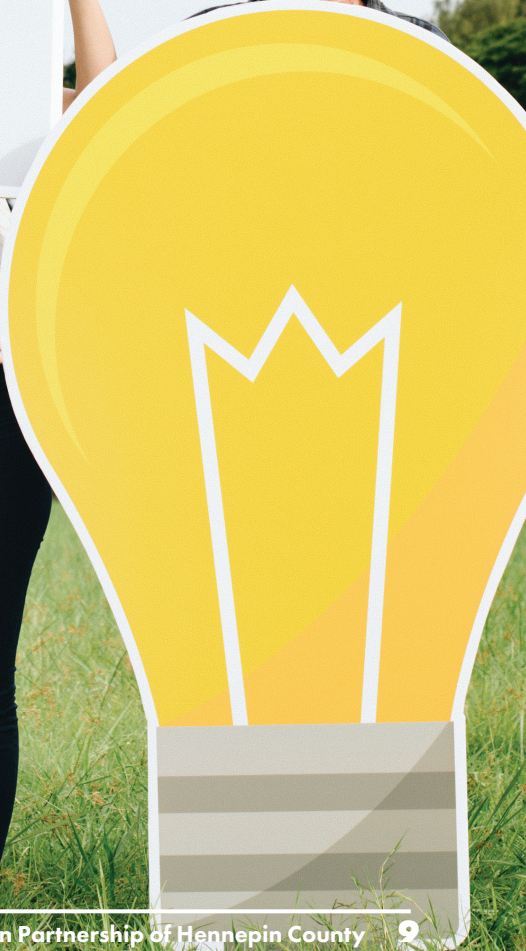
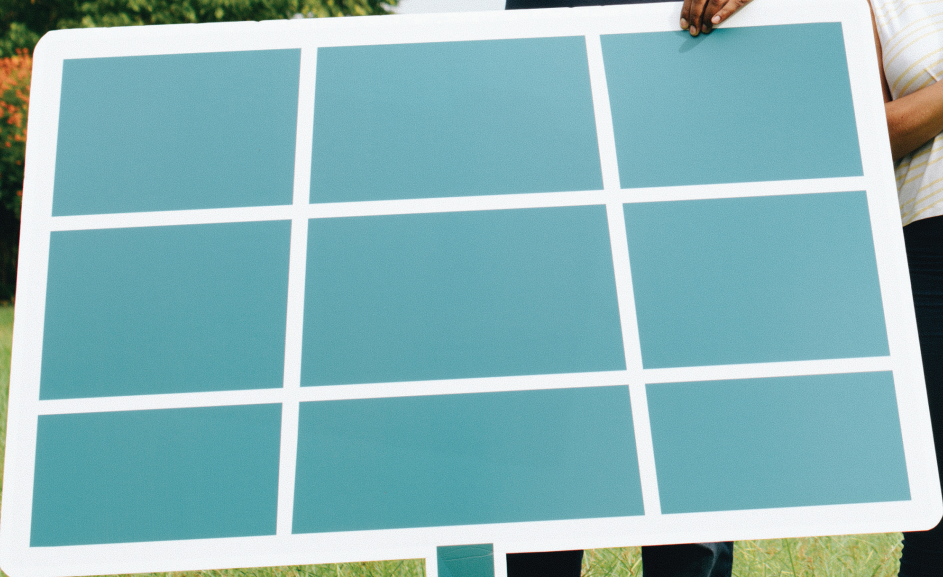
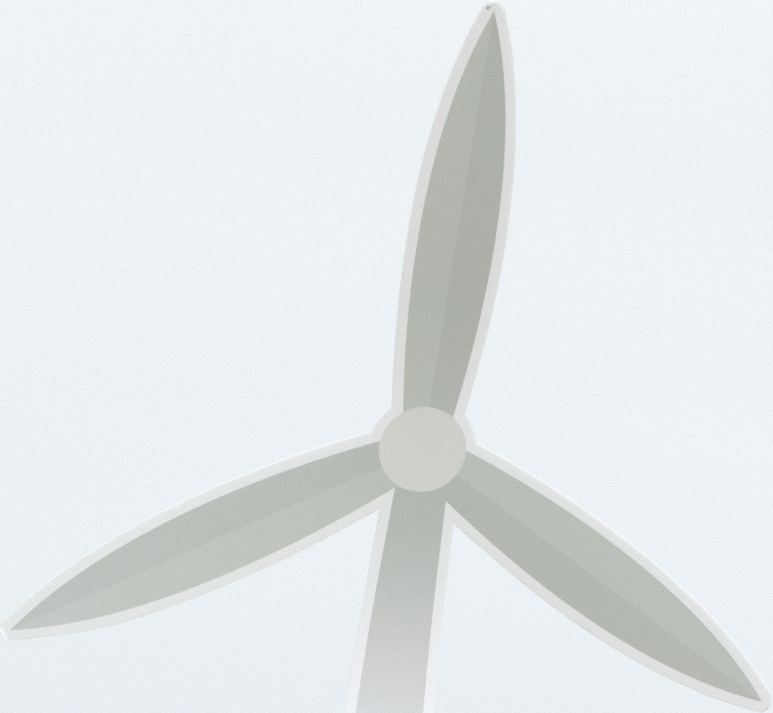
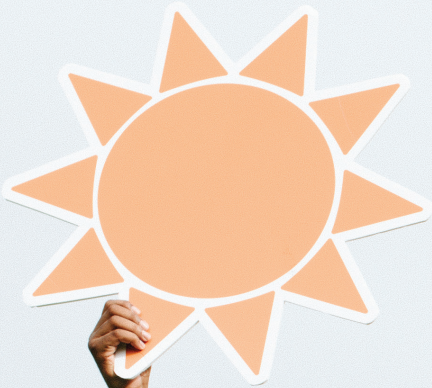
Walk **1.8%** **15.5%**



Bicycle or Other **5.5%** **11.2%**

Hennepin County population, demographics, and poverty information based on 2019 ACS 1-year estimate, U.S. Census Bureau. Poverty statistics based on the 98.3% of the county population for whom poverty status could be determined. Client demographics based on Federal Fiscal Year 2020, Community Services Block Grant Demographics Survey.

Energy Services



Energy Services

Community Action Partnership of Hennepin County has several programs dedicated to helping people meet their immediate needs.

Five of these programs are included in the category of Energy Services:

- **Energy Assistance:** electricity and heating bill assistance grants paid directly to utility provider
- **Energy Safety Program:** engaging, educational digital assemblies for public and charter school and after-school programs, like the Boys and Girls Club
- **Crisis Assistance:** utility bill assistance grants paid directly to utility provider
- **Water Assistance:** water bill assistance grants paid directly to utility provider
- **Energy-Related Repair Program:** emergency repair or replacement of heating systems


These five programs help income-eligible households maintain affordable, continuous, and safe home energy by providing financial assistance toward utility bills. For some, this assistance means a warm, safe home with heat, electricity, water, and a working furnace. For others, it means not having to choose between buying food and medicine or paying utility bills. And sometimes, this

assistance is the last line of defense before a significant setback, like utility disconnection or eviction.

“I am so grateful for all the help I have received. I could not survive without the help. I would lose my home without the assistance.”

— *Energy Assistance Client*

Assistance amounts are determined by income, household size, energy consumption, and dwelling type. Both homeowners and renters may be eligible.

CAP-HC is the largest provider of energy assistance in Minnesota, disbursing ten million dollars in Low-Income Home Energy Assistance Program funds to Hennepin County households in need in 2020. Additionally, CAP-HC provides energy safety programming for thousands of school-aged children each year. 

Energy Services by the Numbers



Energy Assistance

18,626

HOUSEHOLDS



Energy Safety Program

10,000+

SCHOOL-AGED CHILDREN



Energy Assistance Funds Disbursed

\$10

MILLION

Energy Services

Energy Services by the Numbers



Crisis
Assistance

5,719

HOUSEHOLDS



Water
Assistance

568

HOUSEHOLDS



Energy-Related
Repair


179

HOUSEHOLDS

Energy-Related Repair

“My furnace broke and

[CAP-HC staff assisted me] through a rough time and process. It was an emergency, and it almost gave me an anxiety attack ...

[Kesha and Jakozy] did such an amazing job seeing me through the process ... They were both so concerned on making sure I get the furnace working to avoid the house being cold. They thought of me through this entire process and it is well appreciated. I would like to thank them both for going over and beyond to make this process easier.” 



“They thought of me through this entire process, and it is well appreciated.”

— Toni Edwards

Housing Stability

Ensuring people have stable housing is an integral part of breaking the cycle of poverty. Housing stability can lead to less stress, which in turn can lead to better health. In the case of homeownership, housing can also be a way for families to build wealth. As one of the most frequently unmet needs in the community, housing is another area of concentration for Community Action Partnership of Hennepin County. Whether a client is experiencing homelessness, is struggling to make rent or mortgage payments, or is looking for educational resources, CAP-HC is able to help.


Housing Stability Programs and Services include:

- **Emergency Rental Assistance:** past-due rent and rent deposit assistance
- **COVID-19 Housing Assistance Program (CHAP):** special 2020 funding for those who need help paying rent due to a pandemic-related hardship

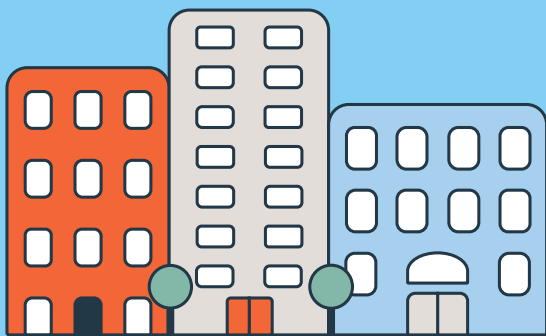
- **Rental Services:** tenant education workshops covering topics such as tenant rights and eviction prevention as well as individual rental counseling
- **Rapid Rehousing:** helps people experiencing homelessness move into safe, affordable housing and provides case management services to assist with other basic needs

“It’s good to have a place that can help people out when they need it.”

— Client Services Program Participant

Through these programs, along with partnerships focused on housing stability, CAP-HC is able to help income-eligible Hennepin County residents find and keep safe, affordable housing. 

Housing Stability Services by the Numbers



Emergency Rental Assistance

\$201,706

RENT & DEPOSIT PAYMENTS

154

HOURS OF CASE MANAGEMENT

75

HOUSEHOLDS

COVID-19 Housing Assistance Program

\$309,356

RENT PAYMENTS

144

HOUSEHOLDS

Housing Stability Services by the Numbers

Rental Services
141
 COUNSELING HOURS
75
 WORKSHOP HOURS

Rapid Rehousing
\$9,973
 RENT & DEPOSIT PAYMENTS
24 HOURS OF CASE MANAGEMENT
8 HOUSEHOLDS



Rapid Rehousing


“I felt that there was no way out, and was at my lowest point in life. After seeking help with CAP-HC, I am relieved and excited that I’m able to breathe and relax. Marilyn was able to help me find housing once again, and I am back in my own [space].” ✒

“I am relieved and excited ... I am back in my own [space].”
 — *Taiwana Garrett*

CAP-HC Homeless Services Coordinator Marilyn Horton, left, and Taiwana, right, pose for a photo together. Marilyn was Taiwana’s Rapid Rehousing case manager in 2020.

Healthcare & Transportation

Barriers such as the high cost of healthcare and transportation can keep people mired in financial hardship, while also preventing them from saving for the future. To address healthcare needs, Community Action Partnership of Hennepin County has a **MNsure Application Assistance** program. Trained CAP-HC staff help people determine their eligibility for MinnesotaCare and other low-cost health insurance options and explore potential tax credits. Then the application is prepared and submitted.

As for transportation, another of the most frequently mentioned unmet needs from the Community Needs Assessment, CAP-HC provides income-eligible clients with financial assistance for auto repairs through its **Vehicle Repair Program**. This enables people to maintain safe, reliable transportation for work, healthcare, appointments, and more. 

COMMUNITY PROFILE

According to 2019 Census data, 4.9% of Hennepin County residents do not have health insurance. Community Strengths and Needs Assessment participants were asked whether all members of their household had health insurance and whether they are able to access the health care they need.

12%
HOUSEHOLDS HAVE
SOME UNINSURED
HOUSEHOLD MEMBERS

10%
HOUSEHOLDS UNABLE
TO ACCESS NEEDED
HEALTH CARE

Healthcare by the Numbers



MNsure Application Assistance

107
HOUSEHOLDS

Transportation by the Numbers

Vehicle Repair Program

96
REPAIRS
COMPLETED

90
HOUSEHOLDS



486
HOURS OF CASE
MANAGEMENT

“[CAP-HC staff] helped me get onto Minnesota state health insurance. Now I’m set up with insurance accepted where I live, and I have access to the healthcare I need. Thank you for helping me.”

— Kit Caryn Mayo

Vehicle Repair Program



“The Vehicle Repair Program came at just the right time.”

— John Flannagan

“I received help through CAP-HC with both their Energy Assistance and Vehicle Repair Programs.

At the onset of the pandemic, I had lost my job. With it being a very emotionally, physically, and financially difficult and challenging year for me, it was such a huge relief and tremendous help to know that I was going to be able to keep my house heated through the winter and have one less monthly bill to worry about.

The Vehicle Repair Program came at just the right time. My older car was beginning to be unsafe to drive. The program helped repair the broken driver’s window, replace my worn out tires , and fix the suspension—right before a big ice storm. I don’t live near an easily accessible bus route, so being able to use my car is really important to me ... The staff were really wonderful and responsive to work with!”



In 2020, CAP-HC worked with **over 50 local repair shops** to provide vehicle repair assistance to Hennepin County community members in need.




Financial Wellness & Homebuyer Services



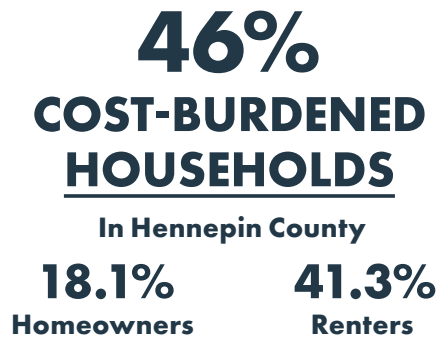
Financial Wellness & Homebuyer Services

As people living at the Federal Poverty Level (FPL) stabilize, an important next step is planning for the future. By learning to balance debt management and day-to-day expenses, and the day-to-day with long-term savings and investments, families can lift themselves out of poverty, build generational wealth, and thrive at home and in their communities.

CAP-HC's **Financial Wellness Workshops** and **Family Assets for Independence in Minnesota** both provide people with the tools they need to become financially secure, covering topics such as budgeting, building good credit, building assets, and more. Individual **Homebuyer Counseling** and **HomeStretch Workshops** are designed to inform and prepare prospective homeowners for homeownership. 

COMMUNITY PROFILE

A household is considered cost burdened if 30% or more of monthly income is spent on housing and utilities. Participants in the Community Needs Assessment were asked how much they spend on housing each month. This number was used to determine an estimate of cost burdened households.



Financial Wellness & Homebuyer Services by the Numbers



Family Assets for Independence in Minnesota

39

INDIVIDUALS SERVED

Financial Wellness Workshops

117

WORKSHOP HOURS

Homebuyer Counseling

187

COUNSELING HOURS PROVIDED

Homestretch Workshops

144

WORKSHOP HOURS

22
INCREASED SAVINGS

14
USED SAVINGS TO PURCHASE HOME OR OTHER ASSET

486
HOURS OF CASE MANAGEMENT

Offered with Spanish Language Translation

COVID-19 & CAP-HC Response


In addition to addressing community needs voiced in the Community Needs Assessment, Community Action Partnership of Hennepin County also responded to unforeseeable needs arising during the COVID-19 pandemic and subsequent lockdown.

One such need was to protect the CAP-HC workforce from the spread of the deadly coronavirus. In mid-March, a complete infrastructure change was necessary to shift from working on site to working from home. CAP-HC provided employees with essential equipment (laptops, cell phones, etc.) and access to cloud-based tools (phones, databases, etc.). Although it was a difficult task, CAP-HC was able to respond in a short period of time to what could be the fastest collective change in recent times, accomplishing its objective of safe and effective operations while continuing to provide essential services for our clients. Similarly, CAP-HC’s Board of Directors and Board Committees continued to guide CAP-HC throughout the pandemic by meeting virtually.


Access to COVID testing was also vital to keep the community safe. With the Minnesota Department of Health, Parents in Community Action, Hennepin County, and Children’s Minnesota, CAP-HC sponsored a COVID testing event in August. Open to everyone, and with no insurance required, hundreds of people received the testing they needed.



Residents also longed for connection and community healing because of the isolation of the extended lockdown and the civil unrest following the death of George Floyd. CAP-HC found a safe way to bring the community together in partnership with the City of Brooklyn Center—a Drive-In Movie Night. Families watched from the safety of their vehicles, while learning about CAP-HC services and energy-saving tips. After one fun-filled success, the model was repeated twice more with collaborators Brooklyn Center Recreation, Brooklyn Center Community Schools, and the City of Brooklyn Park. The events were targeted toward lower-income families, and from post-event follow up, nearly 500 people requested Energy Assistance Program applications.

By centering community voices, creating thoughtful programming, and nimbly responding as needs change, CAP-HC is making Hennepin County a better place to live, one connection at a time. 


Community by the Numbers



3 Drive-In
Movie Nights

650
ATTENDEES

Akeelah and the Bee
Black Panther
Hocus Pocus



COVID-19
Tests

900+

2020 Board Members

COMMUNITY SECTOR

Tyanna Bryant Chloe Jackson Solomon Ogunyemi
 Mercedes Thomas Eric Totten
 Angela Wade Angela Williams

PRIVATE SECTOR

Naweed Ahmadzai Victoria Chambers Justin Gillette
 Kevin Myren Michael Vekich Jeffrey A. Washburne
 Treasurer Board Chair

PUBLIC SECTOR

David Asp Karin Keitel Alysen Nesse
 Vice Chair Secretary
 Sherrie Pugh Allen Rezac
 Josh Schaffer Tonja West-Hafner

BOARD COMMITTEES

Bylaws and Governance Finance and Audit Human Resources
 Program Planning and Evaluation Executive Committee

Financial Summary

Consolidated Statement of Financial Position

Year Ended December 31, 2020

Assets

Cash	\$ 660,231	44.3%
Receivables	711,516	47.8%
Prepaid Expenses	89,336	6.0%
Property & Equipment, Net	28,424	1.9%
Total Assets	\$ 1,489,507	100.0%

Liabilities & Net Assets

Payables	\$ 305,956	20.5%
Accrued Expenses	54,769	3.7%
Grant Advances	738,275	49.6%
Assets Without Donor Restrictions	277,992	18.7%
Assets With Donor Restrictions	112,515	7.7%
Total Liabilities & Net Assets	\$ 1,489,507	100.0%

Consolidated Statement of Activities

Year Ended December 31, 2020

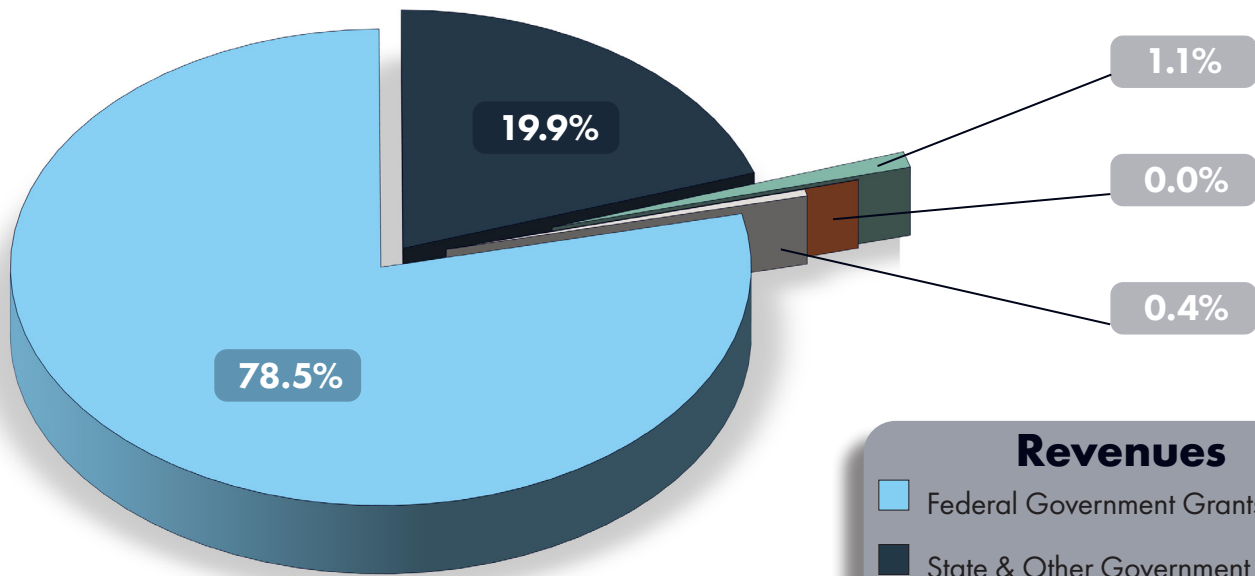
Revenue

Federal Government Grants	5,119,200	78.5%
State and Other Government Grants	1,299,876	19.9%
Corporate, Foundations, and Other Grants	69,249	1.1%
Program Service Fees	1,380	0.0%
Other Revenue	28,839	0.4%
Total Revenue	6,518,544	100.0%

Expenses

Housing & Community Services	2,320,293	35.6%
Energy Assistance Program	2,523,134	38.8%
Planning & Development	674,191	10.4%
Management & General	991,330	15.2%
Total Expenses	6,508,948	100.0%
Change in Net Assets	9,596	

Financial Summary

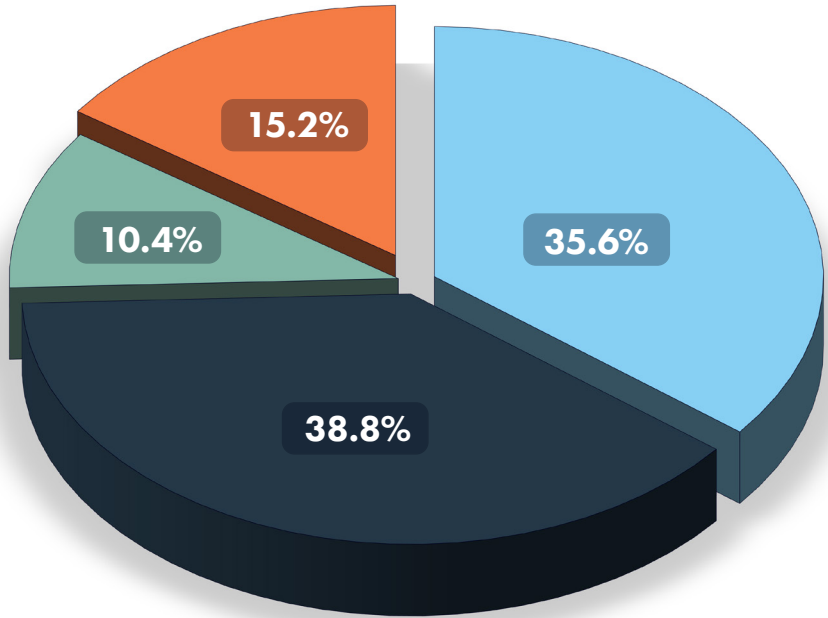


Revenues

- Federal Government Grants
- State & Other Government Grants
- Corporate, Foundations, and Other Grants
- Program Service Fees
- Other Revenue

Expenses

- Client Services
- Energy Assistance Program
- Planning & Development
- Management & General



Thank You

CAP-HC FUNDERS



Thank You

CAP-HC PARTNERS

8218 Truce Center
A Mother's Love Initiative
Beacon Interfaith Housing Collaborative
City of Minneapolis
National Community Action Partnership
Community Action Partnership of Ramsey
& Washington Counties
Edina Community Council
GrayHall LLP
Hennepin Family Services Collaborative
Hennepin South Services Collaborative
Homes for All
Hunger Solutions Minnesota
Legal Services Advocacy Project
Lutheran Social Services
Minnesota Asset Building Coalition
Minnesota Community Action Partnership
Minnesota Council of Churches
Minnesota Council of Nonprofits
Minnetonka Family Collaborative
MRA – The Management Association
National Programming Network
New Salem Missionary Baptist Church
Orono Healthy Youth Family Services
Collaborative
Parents in Community Action Head Start
Partners for Healthy Kids
Plymouth Housing and Redevelopment
Authority
Propel Nonprofits
Public Policy Project
Robbinsdale Redesign
Sabathani Community Center
Schools & Communities in Partnership
St. Anthony New-Brighton Family Services
Collaborative
St. Louis Park Family Services
Collaborative
Sustainable Resource Center
The Improve Group
Twin Cities Road Crew
Twin Cities Urban League
Urban Homeworks
Volunteers of America of Minnesota
We Push for Peace
Westonka Healthy Community
YouthPrise



Community Action

Partnership of Hennepin County

8800 Highway 7, Suite 401
Saint Louis Park, MN 55426

caphennepin.org